

Pelham Road Land for Sale



Prime Office or Townhouse Development Land +/- 1.5 Acres
2401 Pelham Road, GREENVILLE, SC 29615

FEATURES:

- 🏡 Size: 1.5 Acres
- 🏡 Uses: Office or Townhome Site
(See Office & Townhome preliminary drawings)
- 🏡 Utilities: All utilities
- 🏡 Location: Signalized corner/ 1 mile to I-85
- 🏡 Traffic: 19,900 VPD
- 🏡 Frontage: 372' on Pelham Road
- 🏡 Zoning: R-20
- 🏡 Tax Map #: 0533040102000
- 🏡 **Asking Price: \$200,000 /Acre**



See two preliminary site plans for office and townhomes on reverse side. The site plans consider only grading the soil on site.

Jim Hopple, CCIM jim@keystonesc.com Rodger Willoughby rodger@keystonesc.com

VIEW THIS PROPERTY AT:
www.keystonesc.com

Keystone Commercial Group, LLC
451 Haywood Rd.
Greenville, SC 29607

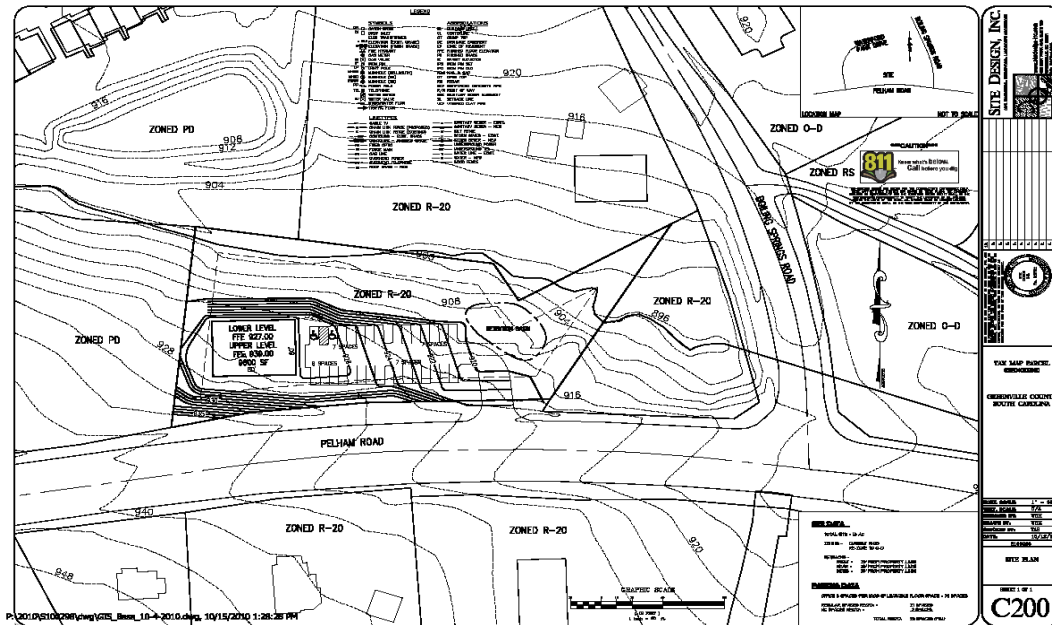
Information contained herein has been obtained from the owners or from other sources deemed reliable. We have no reason to doubt its accuracy, but we regret we cannot guarantee it. All properties subject to change or withdrawal without notice.

Office: 864.297.4955
Fax: 864.297.6207

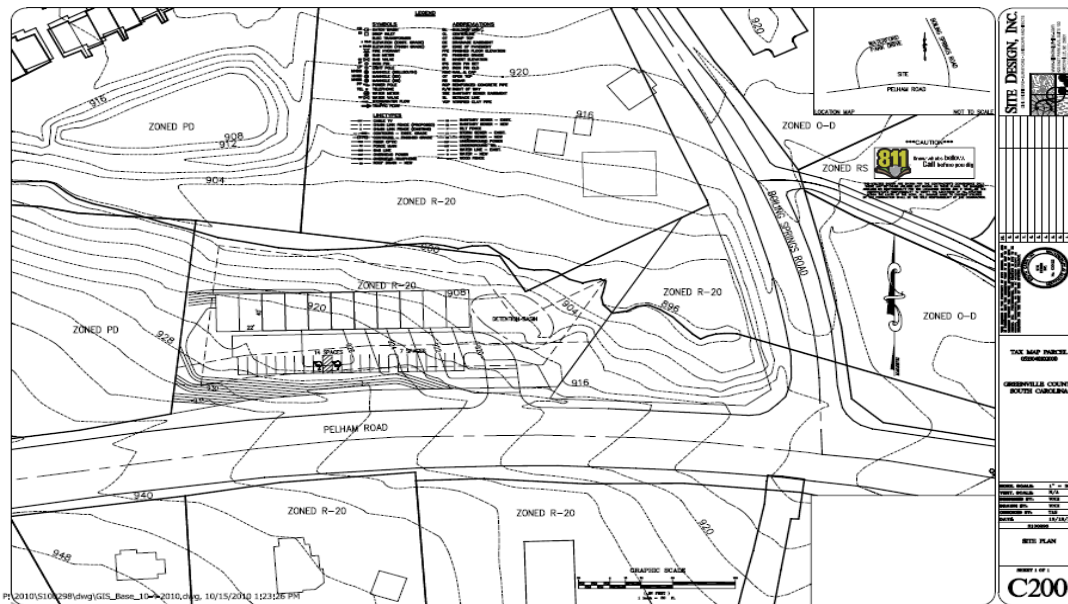

KEYSTONE
THE AUTHORITY IN COMMERCIAL REAL ESTATE

Pelham Road Land for Sale

OFFICE PRELIMINARY SITE PLAN



TOWNHOUSE PRELIMINARY SITE PLAN



Jim Hopple, CCIM jim@keystonesc.com Rodger Willoughby rodger@keystonesc.com

VIEW THIS PROPERTY AT:
www.keystonesc.com

Keystone Commercial Group, LLC
451 Haywood Rd.
Greenville, SC 29607

Information contained herein has been obtained from the owners or from other sources deemed reliable. We have no reason to doubt its accuracy, but we regret we cannot guarantee it. All properties subject to change or withdrawal without notice.

Office: 864.297.4955
Fax: 864.297.6207

