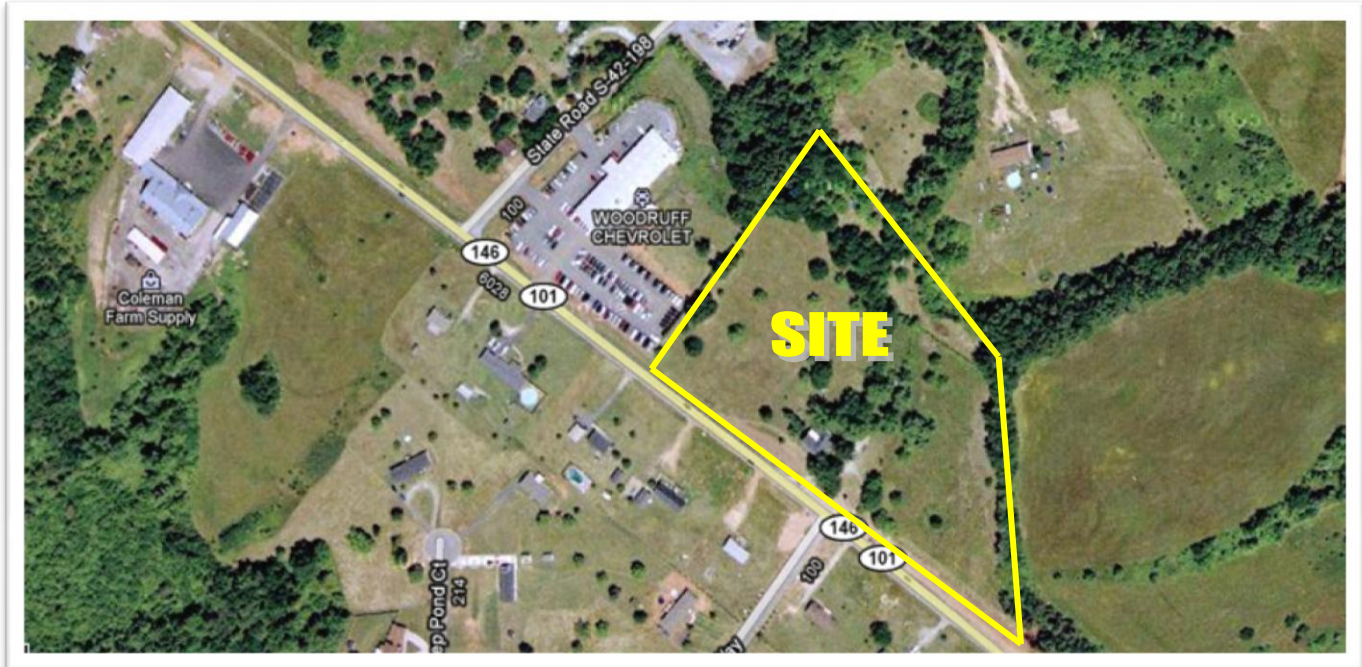


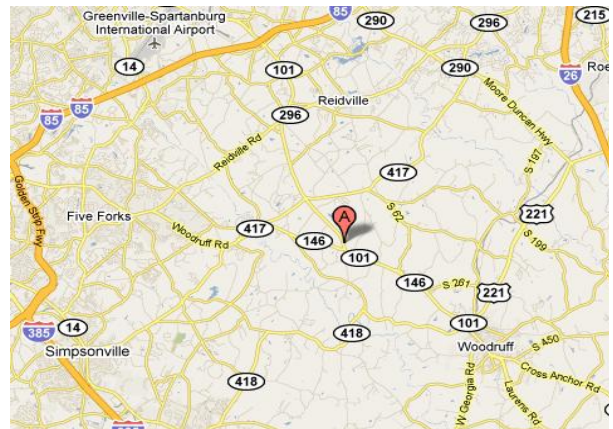
# FOR SALE

# Development Land

**7.6 Acres w/ Rental House and Horse Pasture**  
**6089 Highway 101, Woodruff, SC 29388**



- 🏠 Great location for retail strip center; office park; mobile home park or self storage
- 🏠 800' frontage; 4-lane road; two (2) curb cuts
- 🏠 Located between I-85 & Woodruff
- 🏠 Close to BMW and GSP Airport
- 🏠 Spartanburg Tax Map #4-18-00-018.01
- 🏠 City water, power and gas
- 🏠 Zoning: None
- 🏠 Income on House: \$730 mo. w/ increases
- 🏠 **Asking Price: \$295,000**



**BROKER INTEREST**  
(Owner would consider subdividing)

**Rodger Willoughby: [rodger@keystonesc.com](mailto:rodger@keystonesc.com) (D) 864.672.1292**

VIEW THIS PROPERTY AT:  
[www.keystonesc.com](http://www.keystonesc.com)

Keystone Commercial Group, LLC  
451 Haywood Rd.  
Greenville, SC 29607

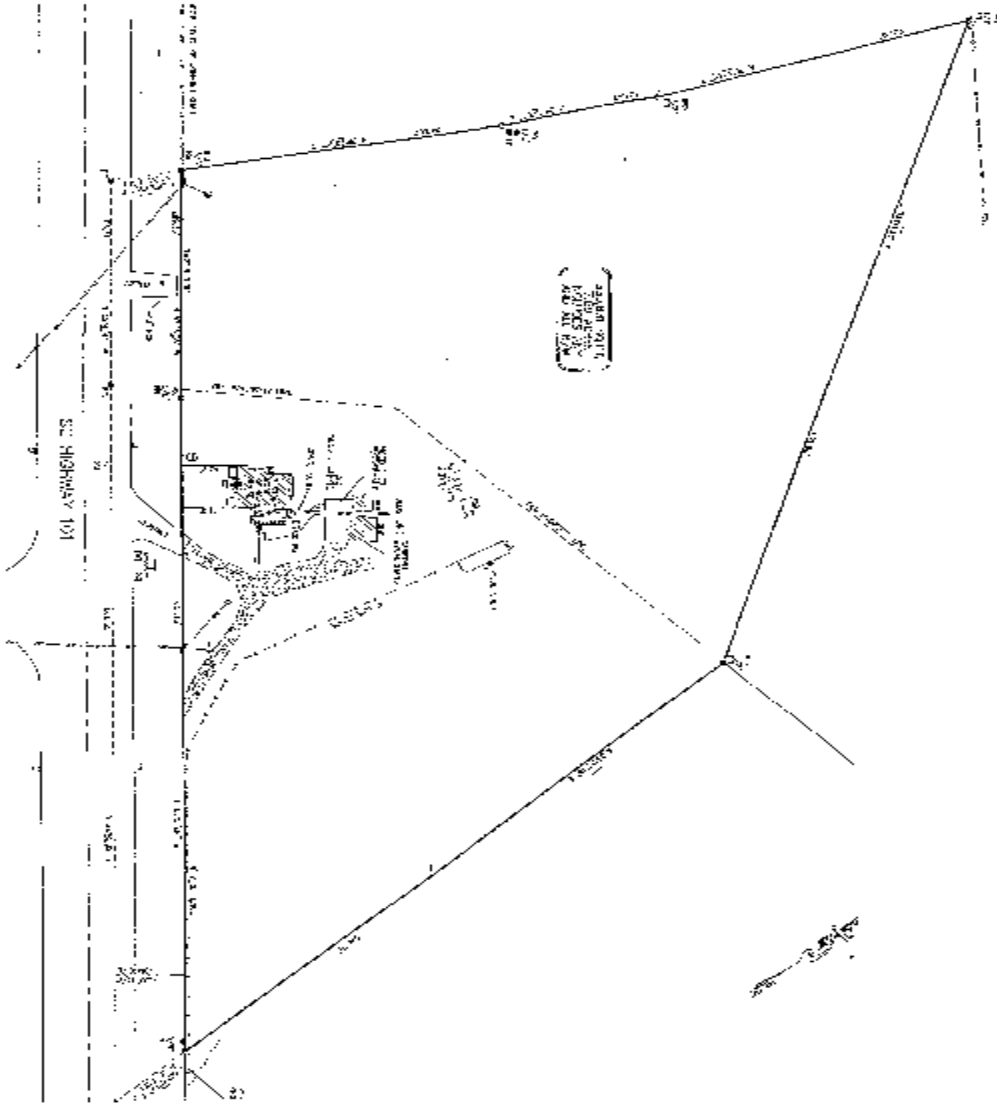
Information contained herein has been obtained from the owners or from other sources deemed reliable. We have no reason to doubt its accuracy, but we regret we cannot guarantee it. All properties subject to change or withdrawal without notice.

**Office: 864.297.4955**  
**Fax: 864.297.6207**

  
**KEYSTONE**  
THE AUTHORITY IN COMMERCIAL REAL ESTATE

# FOR SALE

# Development Land



Rodger Willoughby: [rodger@keystonesc.com](mailto:rodger@keystonesc.com) (D) 864.672.1292

VIEW THIS PROPERTY AT:  
[www.keystonesc.com](http://www.keystonesc.com)

Keystone Commercial Group, LLC  
451 Haywood Rd.  
Greenville, SC 29607

Information contained herein has been obtained from the owners or from other sources deemed reliable. We have no reason to doubt its accuracy, but we regret we cannot guarantee it. All properties subject to change or withdrawal without notice.

Office: 864.297.4955  
Fax: 864.297.6207

**KEYSTONE**  
THE AUTHORITY IN COMMERCIAL REAL ESTATE